



# Understanding employment supports

April 2022

Easy Read version



**ndis**

[ndis.gov.au](https://www.ndis.gov.au)

# How to use this document



The National Disability Insurance Agency (NDIA) wrote this document. When you see the word 'we', it means the NDIA.



This document is written in an easy to read way. We use pictures to explain some ideas.

**Bold**  
Not bold

We have written some words in **bold**.

This means the letters are thicker and darker.

We explain what these words mean.



This Easy Read document is a summary of a page of our website.



You can find this page on our website at

<https://ourguidelines.ndis.gov.au/understanding-supports>



You can ask for help to read this document.

A friend, family member or support person may be able to help you.

# Understanding employment supports

We wrote some guides about different employment supports from:



- the community
- or
- your NDIS plan.

These guides can help you:



- learn about different types of supports
- understand how these supports might help you.

You might want to find out more about:



- what employment is



- why employment support is important



- what research the guides used



- what area the guides focus on.



You can find more information about employment supports on our website.

<https://ourguidelines.ndis.gov.au/understanding-supports/employment-supports>

# What is employment?

**Employment** means you:



- have a job
- go to work
- get paid.

Everyone has different work goals, including:



- the job they want
- the work they want to do
- the **career** they want to have.



Your career is the path you take in your chosen area of work during your life.

## Why is employment important?

Everyone should be able to have a job or career if they want one.



But people with disability can find it harder to:

- find a job
- keep a job.

It's important to support people with disability to:



- find a job
- build a career
- stay in work.



These guides can help you if you're thinking about:

- finding a job
- keeping a job
- changing jobs.

## What research do the guides use?



The guides use research about how supports have worked for other people with disability.

We talked to:



- people with disability
- service providers.



We also used research about how different supports could help people with disability find and keep a job.



In the guides we explain how much research we found about each support.

We tell you if we:



- found lots of research
- didn't find enough research
- need more research to know more about a certain support.

## What areas do the guides focus on?

The guides cover lots of areas including:



- planning a pathway to work



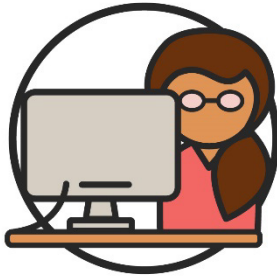
- moving from school to work



- finding a job



- thinking about starting your own business



- keeping a job



- changing jobs.



The Information Access Group created this Easy Read document using stock photography and custom images. The images may not be reused without permission. For any enquiries about the images, please visit [www.informationaccessgroup.com](http://www.informationaccessgroup.com). Quote job number 4521-C.

## More information

For more information about this document,  
please contact us.



[www.ndis.gov.au](http://www.ndis.gov.au)



**1800 800 110**



Follow us on Facebook.

[www.facebook.com/NDISAus](https://www.facebook.com/NDISAus)



Follow us on Twitter.

**@NDIS**

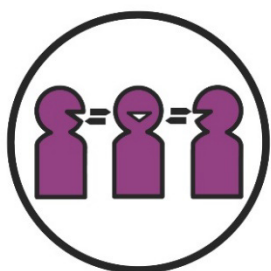
## Support to talk to us



You can talk to us online using our webchat feature.

[nccchat.ndis.gov.au/i3root](https://nccchat.ndis.gov.au/i3root)

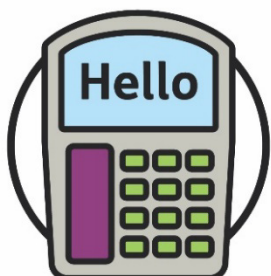
If you speak a language other than English, you can call:



Translating and Interpreting Service (TIS)

**131 450**

If you have a speech or hearing impairment, you can call:



TTY

**1800 555 677**



Speak and Listen

**1800 555 727**



National Relay Service

**133 677**

[www.relayservice.gov.au](https://www.relayservice.gov.au)



[ndis.gov.au](https://www.ndis.gov.au)